

PLAN DE ESTUDIOS



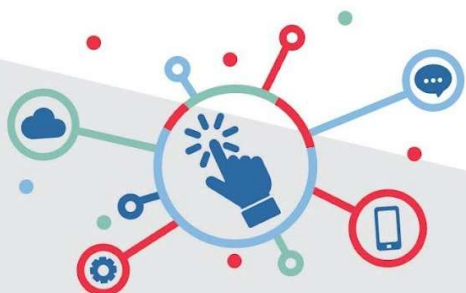
In Jesus Christ we trust

¡Instituto de Inglés altamente calificado!

NIVEL 1 – STARTER 1 (A1.1)

| UNIDAD 1 | MCE | Gramática | Vocabulario |
|--|------|---|-----------------------------------|
| 1A. Hello! | A1.1 | Verb be: I and you | Numbers 0 – 10 |
| 1B. Where are you from? | A1.1 | Verb be: he, she, it | Countries |
| 1C. We're from the US. We're American. | A1.1 | Verb be: we, you, they; Negatives (all persons) | Nationalities; Numbers 11 – 20 |
| Practical English | A1.1 | The alphabet; People on the street: What's your name? How do you spell it? Where are you from? | |

| UNIDAD 2 | MCE | Gramática | Vocabulario |
|-----------------------------------|------|--|------------------------------|
| 2A. What's in your bag? | A1.1 | Singular and plural nouns; a/ an, the | Small things |
| 2B. Family and Friends | A1.1 | Possessive adjectives; possessive s | people and family |
| 2C. A man's car or a woman's car? | A1.1 | Adjectives | Colors and common adjectives |
| Practical English | A1.1 | Personal information; People on the street: Do you have brothers and sisters? How old are they? | |



302 450 4936 ☎

Calle 47b # 14a - 53 ↑
B/ Poblado Comfaunión

esolcolombia2000@gmail.com ✉

PLAN DE ESTUDIOS

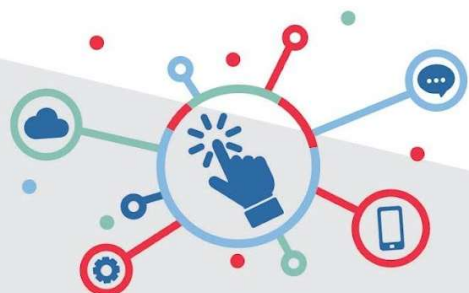


In Jesus Christ we trust

¡Instituto de Inglés altamente calificado!

| UNIDAD 3 | MCE | Gramática | Vocabulario |
|-------------------------------------|------|--|-------------------------|
| 3A. A bad hair day | A1.1 | Simple present: I and you | common verbs 1 |
| 3B. What do you have for breakfast? | A1.1 | Simple present: we, you, they | food and drink |
| 3C. He speaks English at work | A1.1 | Simple present: he, she, it | Jobs and places of work |
| Practical English | A1.1 | What time is it? People on the street: What do you do? Do you like it? What time do you start and finish? | |

| UNIDAD 4 | MCE | Gramática | Vocabulario |
|----------------------------------|------|---|----------------|
| 4A. Do you like mornings? | A1.1 | Adverbs of frequency, simple present | A typical day |
| 4B. Life at the top of the world | A1.1 | Word order in questions; question words | Common verbs 2 |
| 4C. You can't park here | A1.1 | Can / can't: permission and possibility | Common verbs 2 |
| Practical English | A1.1 | How much is it? People on the street: Where do you usually have lunch? What do you have? How much is it? | |



302 450 4936 ☎

Calle 47b # 14a - 53 ↑
B/ Poblado Comfaunión

esolcolombia2000@gmail.com ✉

PLAN DE ESTUDIOS

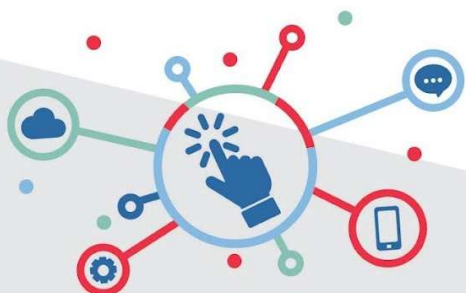


In Jesus Christ we trust

¡Instituto de Inglés altamente calificado!

| UNIDAD 5 | MCE | Gramática | Vocabulario |
|--------------------------------|------|--|---|
| 5A. Before they were famous... | A1.1 | Simple past: be | In, at, on: places |
| 5B. A perfect day? | A1.1 | Simple past: have, go, get | Irregular verbs; review of daily routine verbs |
| 5C. It changed my life | A1.1 | Simple past: regular verbs | Common verbs 3; More irregular verbs |
| Practical English | A1.1 | What's the date today? People on the street: When's your birthday? What did you do on your last birthday? | |

| UNIDAD 6 | MCE | Gramática | Vocabulario |
|----------------------------|------|--|-----------------------|
| 6A. On an island in Alaska | A1.1 | There is / there are | Hotels; in, on, under |
| 6B. Dream town? | A1.1 | There was / there were | Places |
| 6C. Strangers on a train | A1.1 | Review of simple past; Object pronouns: me, him, etc. | Common verbs 3 |
| Practical English | A1.1 | What do you think of it? People on the street: What's the last movie you saw? What did you think of it? | |



302 450 4936 ☎

Calle 47b # 14a - 53 ↑
B/ Poblado Comfaunión

esolcolombia2000@gmail.com ✉

PLAN DE ESTUDIOS



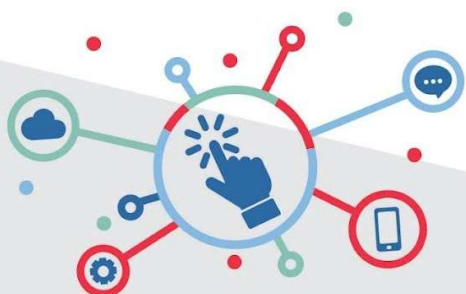
In Jesus Christ we trust

¡Instituto de Inglés altamente calificado!

| UNIDAD 7 | MCE | Gramática | Vocabulario |
|-----------------------------|------|--|---------------------------------------|
| 7A. What are they doing? | A1.1 | Present continuous | Verbs and verb phrases |
| 7B. Trip of a lifetime | A1.1 | Future: be going to (plans) | Future time expressions |
| 7C. What's going to happen? | A1.1 | Future: be going to (predictions) | The weather; review: verb collocation |
| Practical English | A1.1 | Is there a bank near here? / People on the street: Is there a/an... near here? | |

NIVEL 2 – STARTER 2 (A1.2)

| UNIDAD 1 | MCE | Gramática | Vocabulario |
|-------------------------------------|------|--|---|
| 1A. Nice to meet you | A1.2 | Verb be (+), pronouns: I, you, etc. | Numbers 1 – 20, days of the week |
| 1B. I'm not American, I'm Canadian! | A1.2 | Verb be (-) and (?) | Countries and nationalities, numbers 20 – 1000 |
| 1C. His name, her name | A1.2 | Possessive adjectives: my, your, etc. | Personal information |
| 1D. Turn off your cell phones! | A1.2 | A / an, plurals, this / that / these / those | The classroom, common objects, classroom language |
| Practical English | A1.2 | On a plane | |
| Writing | A1.2 | Completing a form | |



302 450 4936 ☎

Calle 47b # 14a - 53
B/ Poblado Comfaunión 📍

esolcolombia2000@gmail.com ✉

PLAN DE ESTUDIOS

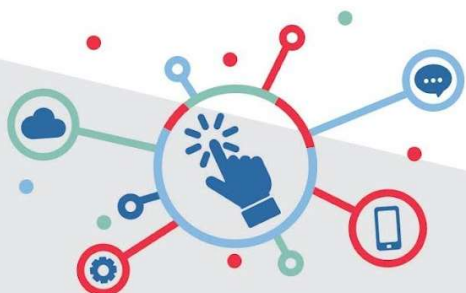


In Jesus Christ we trust

¡Instituto de Inglés altamente calificado!

| UNIDAD 2 | MCE | Gramática | Vocabulario |
|----------------------------------|------|-----------------------------|---------------------------------|
| 2A. Cappuccino and fries | A1.2 | Simple present (+) and (-) | Verb phrases, irregular plurals |
| 2B. When Natasha meets Darren... | A1.2 | Simple present (?) | Common verb phrases |
| 2C. An artist and a musician | A1.2 | A / an + jobs | Jobs |
| 2D. Relatively famous | A1.2 | Possessive s | Family |
| Practical English | A1.2 | At a hotel | |
| Writing | A1.2 | An informal e-mail / letter | |

| UNIDAD 3 | MCE | Gramática | Vocabulario |
|-------------------------------------|------|----------------------------------|----------------------------|
| 3A. Pretty woman | A1.2 | Adjectives | Adjectives, very |
| 3B. Wake up, get out of bed... | A1.2 | Telling the time, simple present | Daily routine |
| 3C. The island with a secret | A1.2 | Adverbs of frequency | Time words and expressions |
| 3D. On the last Wednesday in August | A1.2 | Prepositions of time | The date |
| Practical English | A1.2 | In a coffee shop | |
| Writing | A1.2 | A magazine article | |



302 450 4936 ☎

Calle 47b # 14a - 53
B/ Poblado Comfaunión 📍

esolcolombia2000@gmail.com ✉

PLAN DE ESTUDIOS

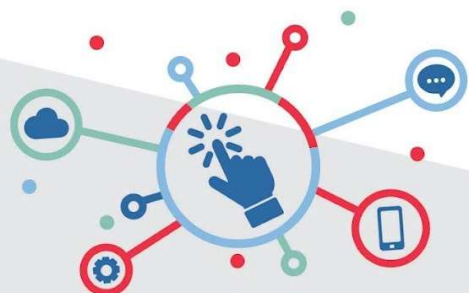


In Jesus Christ we trust

¡Instituto de Inglés altamente calificado!

| UNIDAD 4 | MCE | Gramática | Vocabulario |
|-----------------------------|------|--|----------------------|
| 4A. I can't dance | A1.2 | Can / can't | Verb phrases |
| 4B. Shopping – men love it! | A1.2 | Like + (verb + -ing) | Free time activities |
| 4C. Fatal attraction? | A1.2 | Object pronouns: me, you, him, etc. | Love story phrases |
| 4D. Are you still mine? | A1.2 | Possessive pronouns: mine, yours, etc. | Music |
| Practical English | A1.2 | In a clothing store | |
| Writing | A1.2 | Describing a friend | |

| UNIDAD 5 | MCE | Gramática | Vocabulario |
|---------------------------|------|------------------------------------|-----------------------|
| 5A. Who were they? | A1.2 | Simple past of be: was / were | Word formation |
| 5B. Sydney, here we come! | A1.2 | Simple past: regular verbs | Past time expressions |
| 5C. Girls' night out | A1.2 | Simple past: irregular verbs | Go, have, get |
| 5D. Murder in a mansion | A1.2 | Simple past: regular and irregular | Irregular verbs |
| Practical English | A1.2 | In a gift shop | |
| Writing | A1.2 | A vacation report | |



302 450 4936 ☎

Calle 47b # 14a - 53
B/ Poblado Comfaunión 📍

esolcolombia2000@gmail.com ✉

PLAN DE ESTUDIOS

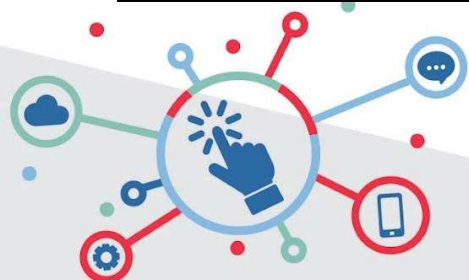


In Jesus Christ we trust

¡Instituto de Inglés altamente calificado!

| UNIDAD 6 | MCE | Gramática | Vocabulario |
|--------------------------------|------|---------------------------------------|-----------------------|
| 6A. A house with a story | A1.2 | There is / there are | Houses and furniture |
| 6B. A night in a haunted hotel | A1.2 | There was / there were | Prepositions of place |
| 6C. Nightmare neighbors | A1.2 | Present continuous | Verb phrases |
| 6D. New York, New York | A1.2 | Simple present or present continuous? | Places in a city |
| Practical English | A1.2 | On the street | |
| Writing | A1.2 | A postcard | |

| UNIDAD 7 | MCE | Gramática | Vocabulario |
|--|------|--|-------------------------------------|
| 7A. What does your food say about you? | A1.2 | A / an, some / any | Food, countable / uncountable nouns |
| 7B. How much water do we really need? | A1.2 | How much, how many? quantifiers: a lot, not much, etc. | Drinks |
| 7C. Trading vacations | A1.2 | Be going to (plans) | Vacations |
| 7D. It's written in the cards | A1.2 | Be going to (predictions) | Verb phrases |
| Practical English | A1.2 | At a restaurant | |
| Writing | A1.2 | Instructions | |



302 450 4936 ☎

Calle 47b # 14a - 53
B/ Poblado Comfaunión 📍

esolcolombia2000@gmail.com ✉

PLAN DE ESTUDIOS

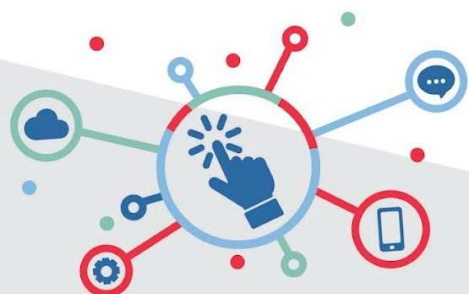


In Jesus Christ we trust

¡Instituto de Inglés altamente calificado!

| UNIDAD 8 | MCE | Gramática | Vocabulario |
|--|------|------------------------|------------------------|
| 8A. The true false show | A1.2 | Comparative adjectives | Personality adjectives |
| 8B. The highest city in the world | A1.2 | Superlative adjectives | The weather |
| 8C. Would you like to drive a Ferrari? | A1.2 | Would like to / like | Adventures |
| 8D. They Dress well but drive badly | A1.2 | Adverbs | Common adverbs |
| Practical English | A1.2 | Going home | |
| Writing | A1.2 | Making a reservation | |

| UNIDAD 9 | MCE | Gramática | Vocabulario |
|---|------|---------------------------------|------------------|
| 9A. Before we met | A1.2 | Present perfect | Been to |
| 9B. I've read the book, I've seen the movie | A1.2 | Present perfect or simple past? | Past participles |



302 450 4936 📞

Calle 47b # 14a - 53 ↑
B/ Poblado Comfaunión

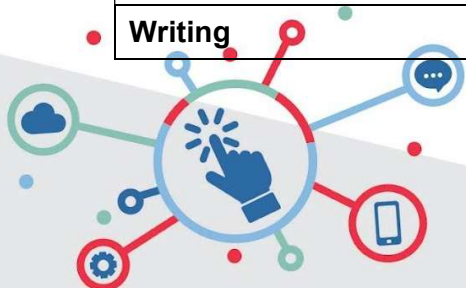
esolcolombia2000@gmail.com ✉

PLAN DE ESTUDIOS

NIVEL 3 – BASIC (A2)

| UNIDAD 1 | MCE | Gramática | Vocabulario |
|----------------------------|-----|--|--|
| 1A. Who's who? | A2 | Word order in questions | Common verb phrases, Classroom language |
| 1B. Who knows you better? | A2 | Simple present | Family, personality adjectives |
| 1C. At the Moulin Rouge | A2 | Present continuous | The body, prepositions of place |
| 1D. The devil's dictionary | A2 | Defining relative clauses (a person who..., a thing that...) | Expressions of paraphrasing: like, for example, etc. |
| Practical English | A2 | At the airport | |
| Writing | A2 | Describing yourself | |

| UNIDAD 2 | MCE | Gramática | Vocabulario |
|------------------------------|-----|--|--|
| 2A. Right place, wrong time | A2 | Simple past: regular and irregular verbs | Vacations |
| 2B. A moment in time | A2 | Past continuous | Prepositions of time and place: at, in, on |
| 2C. Fifty years of pop music | A2 | Questions with and without auxiliaries | Question words, pop music |
| 2D. One October evening | A2 | So, because, but, although | Verb phrases |
| Practical English | A2 | At the conference hotel | |
| Writing | A2 | The story behind a photo | |



302 450 4936 ☎

Calle 47b # 14a - 53
B/ Poblado Comfaunión 📍

esolcolombia2000@gmail.com ✉

PLAN DE ESTUDIOS

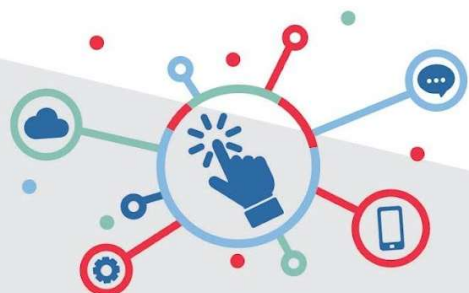


In Jesus Christ we trust

¡Instituto de Inglés altamente calificado!

| UNIDAD 3 | MCE | Gramática | Vocabulario |
|---------------------------------|-----|--|---------------------------|
| 3A. Where are you going? | A2 | Going to, present continuous (future arrangements) | Look (for, through, etc.) |
| 3B. The pessimist's phrase book | A2 | Will / won't (predictions) | Opposite verbs |
| 3C. I'll always love you | A2 | Will / won't (promises, offers, decisions) | Verb + back |
| 3D. I was only dreaming | A2 | Review of tenses: present, past, and future | Verbs + prepositions |
| Practical English | A2 | Restaurant problems | |
| Writing | A2 | An informal letter | |

| UNIDAD 4 | MCE | Gramática | Vocabulario |
|----------------------------------|-----|---|--|
| 4A. From rags to riches | A2 | Present perfect (experience) + ever, never; present perfect or simple past? | Clothes |
| 4B. Family conflicts | A2 | Present perfect + yet and already | Verb phrases |
| 4C. Faster, faster! | A2 | Comparatives, as...as / less...than... | Time expressions: spend time, waste time, etc. |
| 4D. The world's friendliest city | A2 | Superlatives (+ ever + present perfect) | Opposite adjectives |
| Practical English | A2 | Lost in San Francisco | |
| Writing | A2 | Describing where you live | |



302 450 4936 ☎

Calle 47b # 14a - 53
B/ Poblado Comfaunión 📍

esolcolombia2000@gmail.com ✉

PLAN DE ESTUDIOS

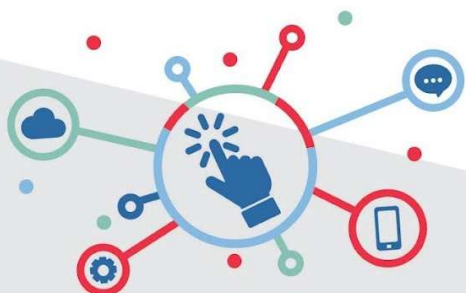


In Jesus Christ we trust

¡Instituto de Inglés altamente calificado!

| UNIDAD 5 | MCE | Gramática | Vocabulario |
|--|-----|---|--|
| 5A. Are you a party animal? | A2 | Uses of the infinitive | Verbs + infinitive |
| 5B. What makes you feel good? | A2 | Uses of the -ing form | Verbs followed by -ing |
| 5C. How much can you learn in a month? | A2 | Have to, don't have to, must, must not, can't | Modifiers: a little (bit), extremely, fairly, really, etc. |
| 5D. The name of the game | A2 | Expressing movement | Prepositions of movement, Sports |
| Practical English | A2 | At a department store | |
| Writing | A2 | A formal e-mail | |

| UNIDAD 6 | MCE | Gramática | Vocabulario |
|--|-----|--|-------------------------------|
| 6A. If something bad can happen, it will | A2 | If + present; will + base form (first conditional) | Confusing verbs |
| 6B. Never smile at a crocodile | A2 | If + past; would + base form (second conditional) | Animals |
| 6C. Decisions, decisions | A2 | May / might (possibility) | Word building: noun formation |
| 6D. What should I do? | A2 | Should / shouldn't | Get |
| Practical English | A2 | At the pharmacy | |
| Writing | A2 | Writing to a friend | |



302 450 4936 ☎

Calle 47b # 14a - 53
B/ Poblado Comfaunión 📍

esolcolombia2000@gmail.com ✉

PLAN DE ESTUDIOS

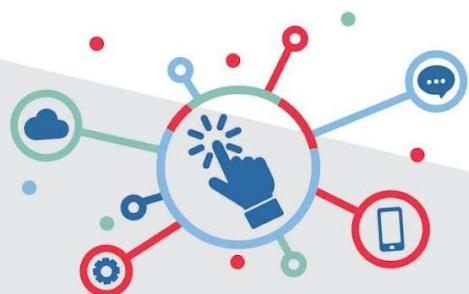


In Jesus Christ we trust

¡Instituto de Inglés altamente calificado!

| UNIDAD 7 | MCE | Gramática | Vocabulario |
|------------------------------|-----|---------------------------------|---|
| 7A. Famous fears and phobias | A2 | Present perfect + for and since | Words related to fear |
| 7B. Born to direct | A2 | Present perfect or simple past? | Biographies |
| 7C. I used to be a rebel | A2 | Used to | School subjects: history, geography, etc. |
| 7D. The mothers of invention | A2 | Passive | Verbs: invent, discover, etc. |
| Practical English | A2 | A boat trip | |
| Writing | A2 | Describing a building | |

| UNIDAD 8 | MCE | Gramática | Vocabulario |
|-----------------------------|-----|------------------------------------|---|
| 8A. I hate weekends! | A2 | Something, anything, nothing, etc. | Adjectives ending in -ed and -ing |
| 8B. How old is your body? | A2 | Quantifiers, too, not enough | Health and lifestyle: use sunscreen, etc. |
| 8C. Waking up is hard to do | A2 | Word order of phrasal verbs | Phrasal verbs |
| 8D. "I'm Jim." "So am I." | A2 | So / neither + auxiliaries | Similarities |
| Practical English | A2 | On the phone | |
| Writing | A2 | Giving your opinion | |



302 450 4936 ☎

Calle 47b # 14a - 53
B/ Poblado Comfaunión 📍

esolcolombia2000@gmail.com ✉

PLAN DE ESTUDIOS



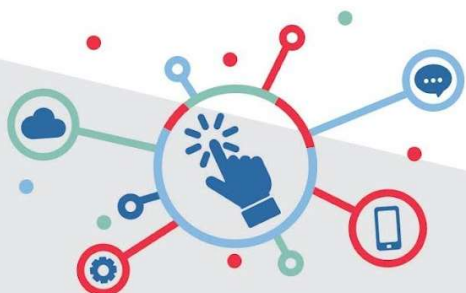
In Jesus Christ we trust

¡Instituto de Inglés altamente calificado!

| UNIDAD 9 | MCE | Gramática | Vocabulario |
|---|-----|-----------------|--------------------------------------|
| 9A. Before we met | A2 | Past perfect | Adverbs: suddenly, immediately, etc. |
| 9B. I've read the book, I've seen the movie | A2 | Reported speech | Say, tell, or ask? |

NIVEL 4 – INTERMEDIATE (B1)

| UNIDAD 1 | MCE | Gramática | Vocabulario |
|--------------------------------------|-----|--|--|
| 1A. Food: fuel or pleasure? | B1 | Present tenses: simple and continuous, action and non-action verbs | Food and restaurants |
| 1B. If you really want to win, cheat | B1 | Past tenses: simple, continuous, perfect | Sports |
| 1C. We are family | B1 | Future forms: going to, present continuous, will | Family, personality; Each other or reflexive pronouns? |
| Practical English | B1 | Introductions | |
| Writing | B1 | Describing a person | |



302 450 4936 ☎

Calle 47b # 14a - 53 ↑
B/ Poblado Comfaunión

esolcolombia2000@gmail.com ✉

PLAN DE ESTUDIOS

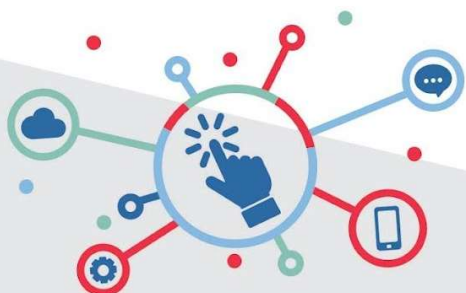


In Jesus Christ we trust

¡Instituto de Inglés altamente calificado!

| UNIDAD 2 | MCE | Gramática | Vocabulario |
|------------------------|-----|---------------------------------|--|
| 2A. Ka-ching! | B1 | Present perfect and simple past | Money, phrasal verbs |
| 2B. Changing your life | B1 | Present perfect continuous | Strong adjectives: exhausted, amazed, etc. |
| 2C. Race to the sun | B1 | Comparatives and superlatives | Transportation and travel how long + take |
| Practical English | B1 | In the office | |
| Writing | B1 | Telling a story | |

| UNIDAD 3 | MCE | Gramática | Vocabulario |
|--------------------------------------|-----|--|-----------------------|
| 3A. Modern manners | B1 | Must, have to, should (obligation) | Cell phones |
| 3B. Judging by appearances | B1 | Must, may, might, can't (deduction) | Describing people |
| 3C. If at first you don't succeed... | B1 | Can, could, be able to (ability and possibility) | -ed / -ing adjectives |
| Practical English | B1 | Renting an apartment | |
| Writing | B1 | An informal letter | |



302 450 4936 ☎

Calle 47b # 14a - 53 ↑
B/ Poblado Comfaunión

esolcolombia2000@gmail.com ✉

PLAN DE ESTUDIOS

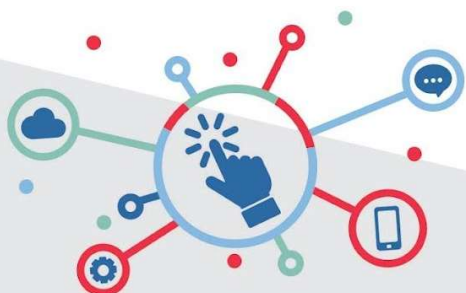


In Jesus Christ we trust

¡Instituto de Inglés altamente calificado!

| UNIDAD 4 | MCE | Gramática | Vocabulario |
|----------------------------|-----|---|-------------|
| 4A. Back to school, age 35 | B1 | First conditional and future time clauses when, until, etc. | Education |
| 4B. An ideal world... | B1 | Second conditional | Houses |
| 4C. Still friends? | B1 | Usually and used to | Friendship |
| Practical English | B1 | A visit from a pop star | |
| Writing | B1 | Describing a house or an apartment | |

| UNIDAD 5 | MCE | Gramática | Vocabulario |
|-----------------------------------|-----|-----------------------------------|-------------------------------------|
| 5A. Slow down, you move too fast | B1 | Quantifier | Noun formation |
| 5B. Same planet, different worlds | B1 | Articles: a / an, the, no article | Verbs and adjectives + prepositions |
| 5C. Job swap | B1 | Gerunds and infinitives | Work |
| Practical English | B1 | Meetings | |
| Writing | B1 | Formal letters and a résumé | |



302 450 4936 ☎

Calle 47b # 14a - 53
B/ Poblado Comfaunión 📍

esolcolombia2000@gmail.com ✉

PLAN DE ESTUDIOS

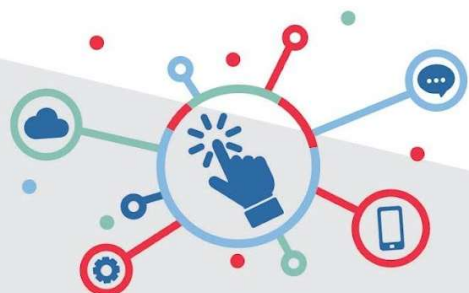


In Jesus Christ we trust

¡Instituto de Inglés altamente calificado!

| UNIDAD 6 | MCE | Gramática | Vocabulario |
|-------------------------------------|-----|--|----------------|
| 6A. Love in the supermarket | B1 | Reported speech: statements, questions, and commands | Shopping |
| 6B. See the movie... get on a plane | B1 | Passive: be + past participle | Movies |
| 6C. I need a hero | B1 | Relative clauses: defining and non-defining | What people do |
| Practical English | B1 | Breaking news | |
| Writing | B1 | A movie review | |

| UNIDAD 7 | MCE | Gramática | Vocabulario |
|-------------------------------|-----|-----------------------------------|-------------------------------|
| 7A. Can we make our own luck? | B1 | Third conditional | Making adjectives and adverbs |
| 7B. Murder mysteries | B1 | Tag questions, indirect questions | Compound nouns |
| 7C. Turn it off | B1 | Phrasal verbs | Television, phrasal verbs |
| Practical English | B1 | Everything in the open | |
| Writing | B1 | An article for a magazine | |



302 450 4936 ☎

Calle 47b # 14a - 53 ↑
B/ Poblado Comfaunión

esolcolombia2000@gmail.com ✉

PLAN DE ESTUDIOS



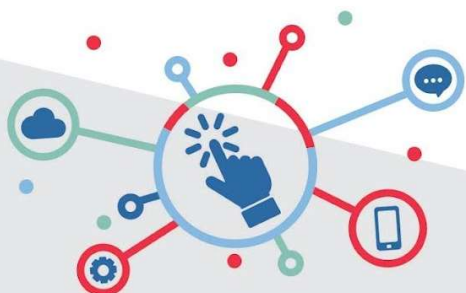
In Jesus Christ we trust

¡Instituto de Inglés altamente calificado!

NIVEL 5 – ADVANCED (B2)

| UNIDAD 1 | MCE | Gramática | Vocabulario |
|------------------------|-----|---|-------------------------------|
| 1A. Q and A | B2 | Review: question formation | Guessing meaning from context |
| 1B. Do you believe it? | B2 | Auxiliary verbs; the... the... + comparatives | Personality |
| 1C. You're the doctor! | B2 | Present perfect (simple and continuous) | Illness and treatment |
| Colloquial English | B2 | What does the future hold? | |
| Writing | B2 | An informal e-mail / letter | |

| UNIDAD 2 | MCE | Gramática | Vocabulario |
|--|-----|--|---|
| 2A. National stereotypes: truth or myth? | B2 | Adjectives as nouns, adjective order | Clothes and fashion |
| 2B. Air travel: the inside story | B2 | Narrative tenses, past perfect continuous; so / such... that | Air travel |
| 2C. Incredibly short stories | B2 | Adverbs and adverbial phrases | Confusing adverbs and adverbial phrases |
| Colloquial English | B2 | Flying high | |
| Writing | B2 | A short story | |



302 450 4936 ☎

Calle 47b # 14a - 53
B/ Poblado Comfaución 📍

esolcolombia2000@gmail.com ✉

PLAN DE ESTUDIOS

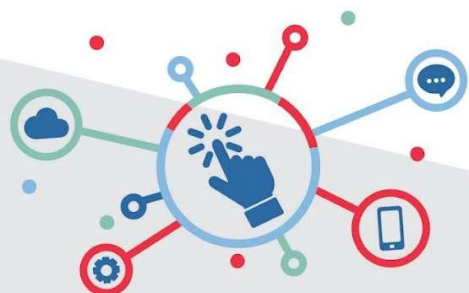


In Jesus Christ we trust

¡Instituto de Inglés altamente calificado!

| UNIDAD 3 | MCE | Gramática | Vocabulario |
|--|-----|--|-----------------------|
| 3A. The one place a burglar won't look | B2 | Passive (all forms), it is said that..., he is thought to..., etc. | Crime and punishment |
| 3B. Stormy weather | B2 | Future perfect and future continuous | Weather |
| 3C. Taking a risk | B2 | Conditionals and future time clauses; likely and probably | Expressions with take |
| Colloquial English | B2 | High risk? | |
| Writing | B2 | Expressing your opinion | |

| UNIDAD 4 | MCE | Gramática | Vocabulario |
|----------------------------------|-----|---------------------------------------|----------------------|
| 4A. Would you get out alive? | B2 | Unreal conditionals | Feelings |
| 4B. How I trained my husband | B2 | Past modals; would rather, had better | Verbs often confused |
| 4C. Let your body do the talking | B2 | Verbs of the senses | The body |
| Colloquial English | B2 | Stage and screen | |
| Writing | B2 | An article | |



302 450 4936 ☎

Calle 47b # 14a - 53 ↑
B/ Poblado Comfaunión

esolcolombia2000@gmail.com ✉

PLAN DE ESTUDIOS

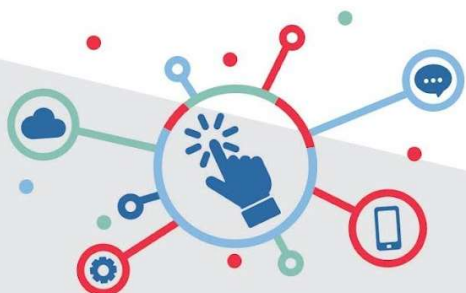


In Jesus Christ we trust

¡Instituto de Inglés altamente calificado!

| UNIDAD 5 | MCE | Gramática | Vocabulario |
|-----------------------------|-----|----------------------------------|-------------|
| 5A. The psychology of music | B2 | Gerunds and infinitives | Music |
| 5B. Counting sheep | B2 | Used to, be used to, get used to | Sleep |
| 5C. Breaking news | B2 | Reporting verbs; as | The media |
| Colloquial English | B2 | Music festivals | |
| Writing | B2 | A formal letter | |

| UNIDAD 6 | MCE | Gramática | Vocabulario |
|-----------------------------|-----|--|-------------------------|
| 6A. Speaking to the world | B2 | Articles | Collocation: word pairs |
| 6B. Bright lights, big city | B2 | Uncountable, plural, and collective nouns; have something done | Cities and towns |
| 6C. Eureka! | B2 | Quantifiers: all / every, etc. | Science |
| Colloquial English | B2 | Great cities | |
| Writing | B2 | A report | |



302 450 4936 ☎

Calle 47b # 14a - 53 ↑
B/ Poblado Comfaunión

esolcolombia2000@gmail.com ✉

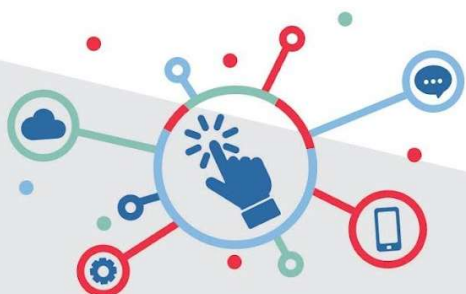
PLAN DE ESTUDIOS



In Jesus Christ we trust

¡Instituto de Inglés altamente calificado!

| UNIDAD 7 | MCE | Gramática | Vocabulario |
|-----------------------------|-----|---|--|
| 7A. I wish you wouldn't...! | B2 | Structures after wish | -ed / -ing adjectives and related verbs; expressions with go |
| 7B. A test of honesty | B2 | Clauses of contrast and purpose; whatever, whenever, etc. | Business and advertising |
| 7C. Tingo | B2 | Relative clauses | Prefixes |
| Colloquial English | B2 | Words | |
| Writing | B2 | "For and against" | |



302 450 4936 ☎

Calle 47b # 14a - 53 ↑
B/ Poblado Comfaunión

esolcolombia2000@gmail.com ✉